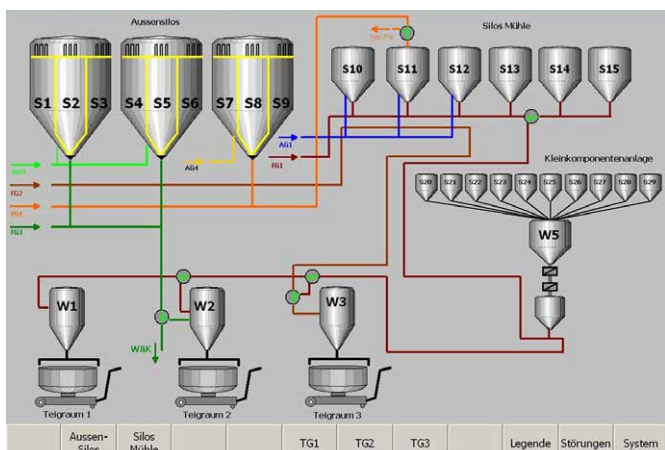


**Project description**

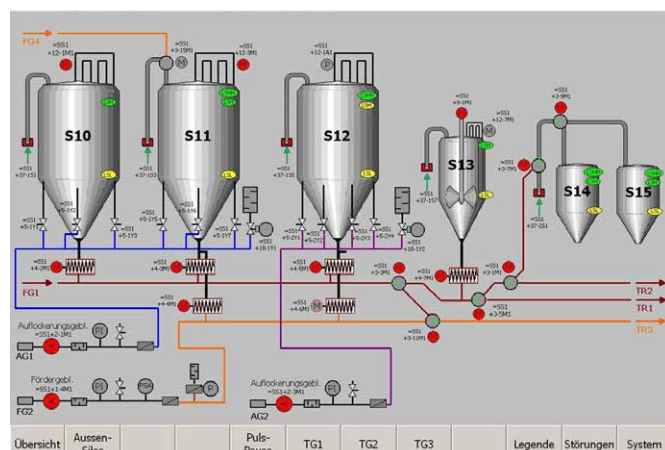
# Automation of an industrial bakery

**Task:**

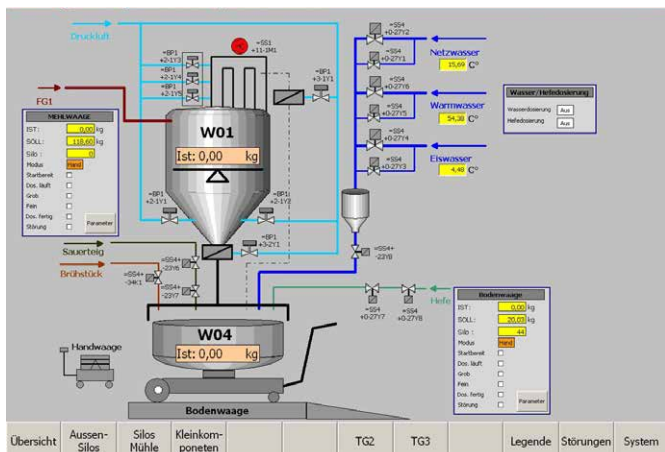
Based on stored recipes, the respective charging jobs are transferred to the control system, which controls the supply of the individual components and reports back the quantities actually consumed.



System overview



Silo fill levels



Dough room 1

## Our solution concept:

- The superimposed visualisation is a graphic representation of the plant.
- All error messages are received here and archived.
- Any adjustments required can be made from here.
- The control system covers:  
Flour silos, scales, dough rooms and the ingredient supply, e.g. water and yeast

## Automation of an industrial bakery

### Technical details:

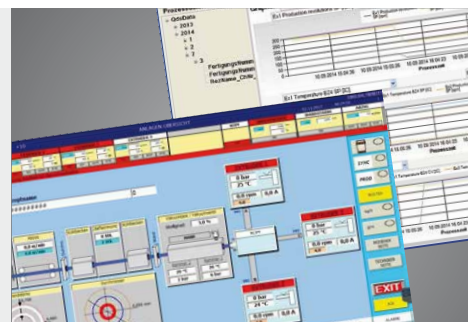
<b>Visualisation</b>	WinCC Flexible
<b>Central control system</b>	Siemens S7-414-2DP with integrated PROFIBUS interface
<b>Water dosing control system</b>	Siemens S7-315-2DP with integrated PROFIBUS interface, Sartorius weight controller with integrated PROFIBUS interface

### Our scope of services:

- Design and planning  
Creation of AutoCAD drawings  
(EPLAN 8 incl. Fluid / WSCAD / ELCAD)
- Plant production
- Control system equipment
- Commissioning up to the handover to production
- Employee training and operator instruction
- Complete documentation
- CE certification

### Everything from a single source

As a subsidiary of the **PütZ Group**, we offer more than just process automation. The joint development of ten mechanical and plant engineering companies to date has produced **synergy effects** that benefit our customers.



**PütZ Prozessautomatisierung GmbH**  
Am Saarufer 8  
54439 Saarburg  
GERMANY

info@puetzgroup.de  
Phone: +49 6581 9299-0  
www.puetzautomatisierung.de

